

# Versailles Second and Third Source Reinforcement Project

## About the Project

American Municipal Power Transmission (AMPT) plans to construct approximately 14 miles of new 69-kilovolt (kV) transmission line between four substations and one switching station located in Darke and Shelby counties. One new substation and one new switching station will be constructed in the Village of Versailles and two existing substations will be expanded. The fourth substation is an existing AES-owned substation located north of Russia in Shelby County. The project will create a looped transmission line feed for the Village of Versailles (An AMP Member), strengthening the regional electric grid, improving reliability and reducing the likelihood of outages for customers in Versailles and the surrounding area.



## About Us

### American Municipal Power, Inc. (AMP)

AMP is a nonprofit corporation that provides wholesale energy supply and related services to its Members. AMP was founded in 1971 when a group of municipally owned electric systems joined forces to lower costs and increase the reliability of their power supply to benefit their consumer-owners. Today, AMP has grown to serve 130+ public power Members across nine states.

### AMP Transmission, LLC (AMPT)

AMPT is a not-for-profit Ohio limited liability corporation formed in 2018 to own, operate and maintain transmission facilities for the benefit of AMP Members. AMPT's vision is to provide cost-effective transmission, related services, and a competitive alternative to benefit AMP Members, enhance reliability and ensure comparable service.

## Project Description



The four new transmission lines are located:

- From the Baker Switching Station, located on Baker Road in Versailles, to the existing Greenlawn Substation which will be expanded, located on Greenlawn Avenue in Versailles.
- From Greenlawn Substation to the new McGreevey Road Substation, located east of Versailles.
- From McGreevey Road Substation to the existing Water Street Substation, which will be expanded, located north of the railroad.
- From the Water Street Substation in Versailles to the existing AES Russia Substation, north of Russia, on Russia Houston Road.

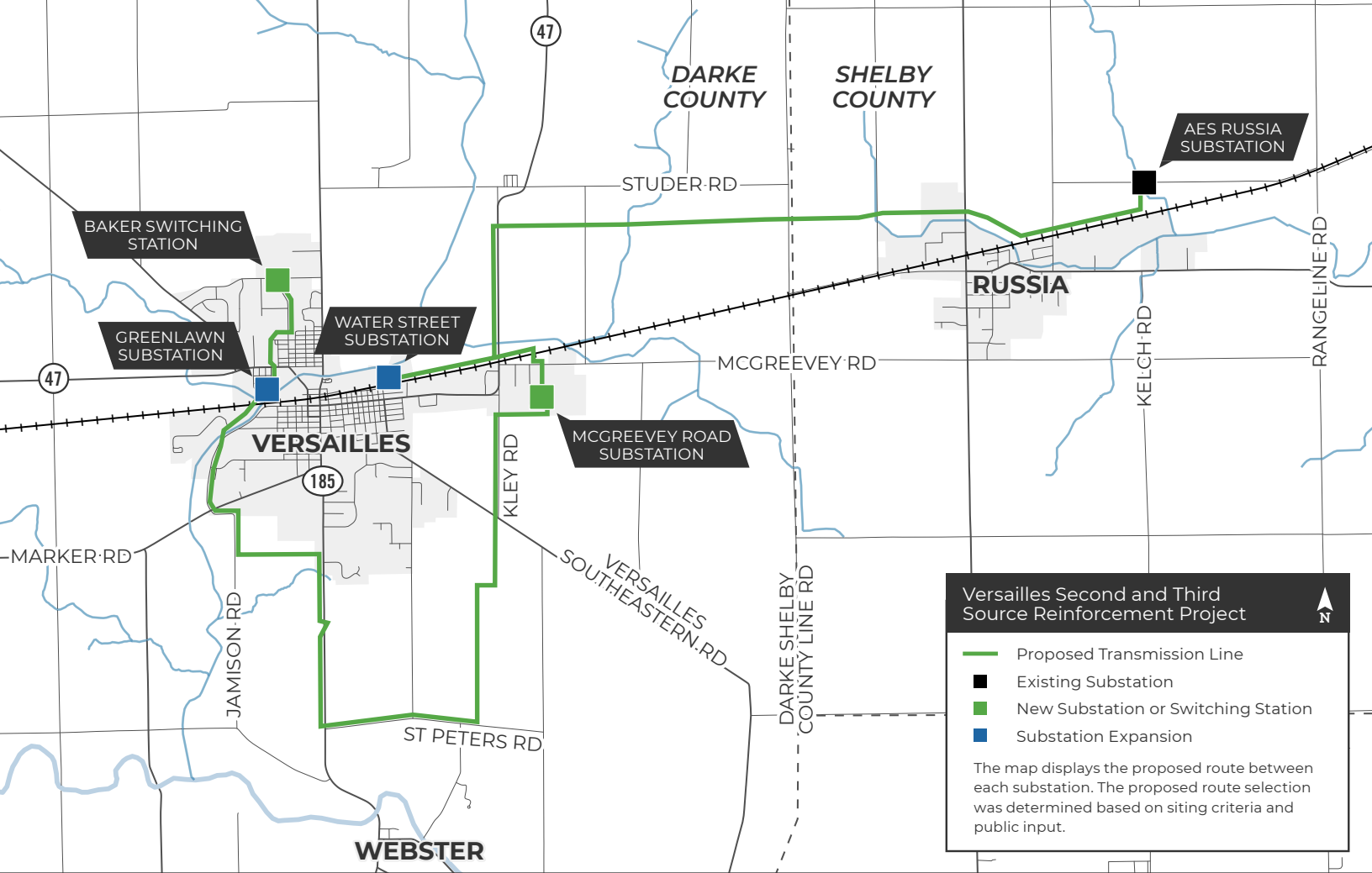
Project Construction is expected to start mid-2027 and conclude by the end of 2028.

## Benefits to the Community



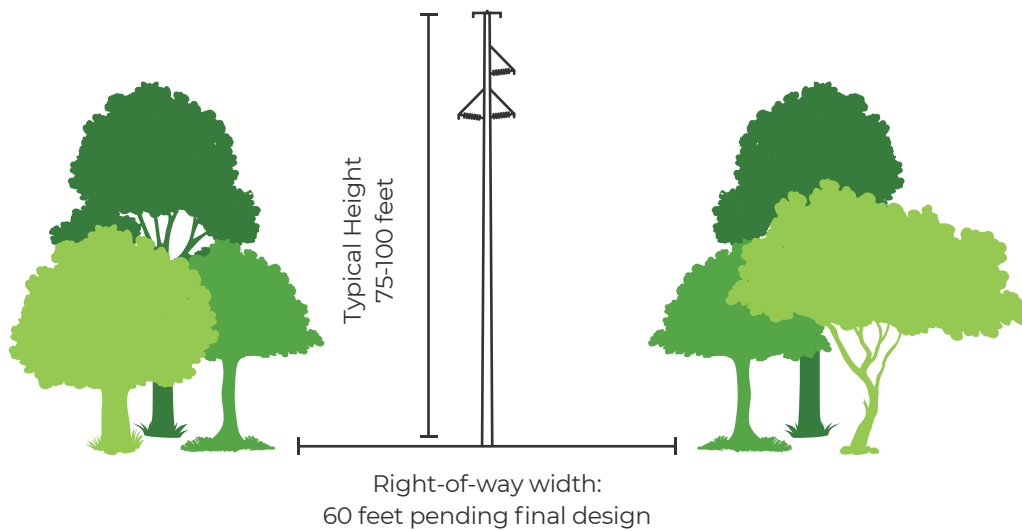
The Versailles Second and Third Source Reinforcement Project:

- Strengthens electric reliability to the Village of Versailles (an AMP Member).
- Enhances resiliency by providing a second and third interconnection to the 69-kV regional system.
- Further improves redundancy and operational flexibility for the electric system.



### Proposed Structure Information

- Steel monopole structures
- Typical height: 75-100 feet
- Right-of-way width: 60 feet, pending final design



For more information contact Nancy Cropper Burns, ROW agent at O.R. Colan and Associates:

Email: [nancy.cropperburns@orcolan.com](mailto:nancy.cropperburns@orcolan.com)

Phone: 614-975-2996

Website: [www.amppartners.org/VersaillesReinforcementProject](http://www.amppartners.org/VersaillesReinforcementProject)

**AMP**  
TRANSMISSION